

## Are Ape Men Real or Pretend? (Answer Key)

**Activity: draw lines to connect the term with the related items**

- |                          |                                |
|--------------------------|--------------------------------|
| 1. Observational science | A. Remains of something        |
| 2. Historical science    | B. Thoughts about God          |
| 3. Fossils               | C. Deals with the distant past |
| 4. Worldview             | D. Experiments                 |

**Activity: unscramble the following words**

- |                  |                      |
|------------------|----------------------|
| 1. ATLBSOEARIVNO | <u>observational</u> |
| 2. NSCEIEC       | <u>science</u>       |
| 3. LRTIIOHASC    | <u>historical</u>    |
| 4. LOSFISS       | <u>fossils</u>       |
| 5. IWERWODVL     | <u>worldview</u>     |

## The Fossil Record

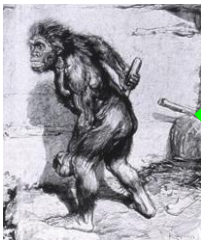
Interpretations of the fossil record for human evolution have been filled with mistakes, fraud and incorrect assumptions. After watching the video, draw lines to connect the phony ape men to what they really found.



Nebraska Man



Piltown Man



Neanderthal Man



Ardipithecus  
ramidus (ARDI)



Australopithecus  
afarensis (Lucy)



Humans



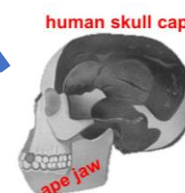
Extinct ape



Pig's tooth



Extinct ape



human skull cap

ape jaw

**FRAUD!**